

## UL-LL

# HYPER SPECTRAL

LED ILLUMINATION SYSTEM

Metaphase has another machine vision first, Hyperspectral broad band LED illumination! Finally break away from the typical hyperspectral Halogen light source with its high temperature and high-power consumption. Metaphase Hyperspectral VNIR 428-915nm or Broadband SWIR illumination (1050-1650nm) provide the ideal match to your favorite Hyperspectral camera. Don't need the full spectrum? Metaphase can tailor the light sources to match the camera's spectral response and specific application requirements.



Utilizing a full rod focal lens, the UL-LL provides a tight structured beam of light up to 12 inches (30.48 cm). The optimal working distance is 5 inches (12.7 cm). For working distances beyond 12 inches (30.48 cm), please see our Collimated Line Light offerings. High uniformity ( $\pm 5\%$ ) makes the UL Line Light ideal for front and back lighting line scan applications.

### FEATURES

- Built-in Constant Current Driver with 0-10VDC Intensity Control
- Passive cooling (no fans needed)
- Compliance: CE and ROHS
- Compatible with DDC-3 and ILD-35 Dimmers

### APPLICATIONS

- Color chemical analysis
- Sorting
- Geometry measurements of long targets
- Direct position measurement
- Tube or bottle inspection
- Food and Pharmaceutical Inspections

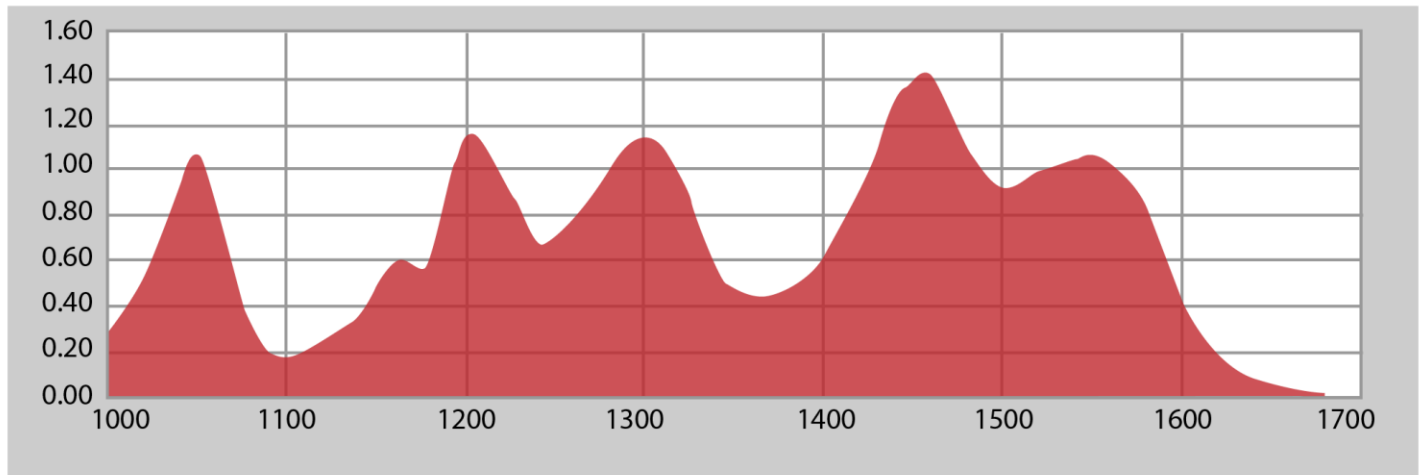
### GENERAL SPECIFICATIONS

<b>Power Source:</b>	24VDC $\pm 5\%$
<b>Cable (Standard):</b>	10-foot cable with flying leads
<b>Housing:</b>	Black Anodized Aluminum
<b>Ambient Temp:</b>	-20°C to 40°C
<b>Lifetime Expectancy:</b>	50,000 hours

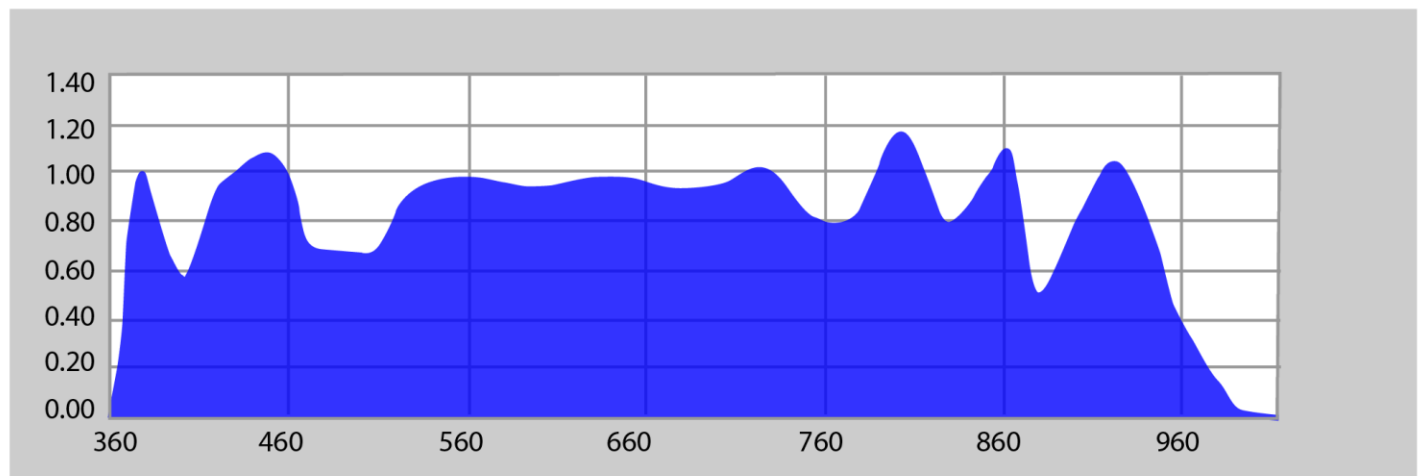
UL-LL



Broadband SWIR

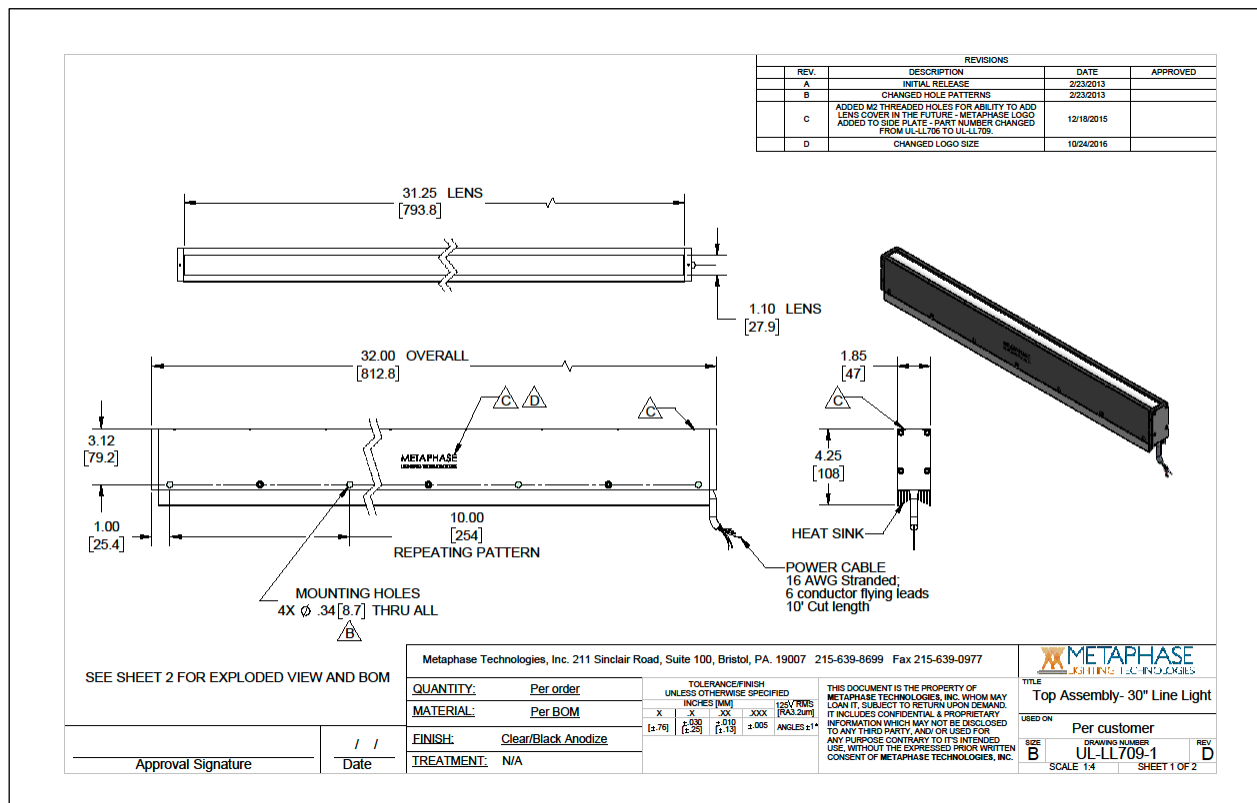


Visible-NIR\*



### UL-LL

Sample Part Number: **UL-LL709-C428C650-24Z**



### COMPLIANCE



### CONTACT US

Contact Metaphase Technologies at **215-639-8699** or your local representative for additional details, options and customizations.